

EMPOWER NETWORK SECURITY WITH VISIBILITY INTO HYBRID ENVIRONMENTS

IntellaView Enterprise Lite

KEY BENEFITS:

Visibility Solution For Networks

IntellaView Enterprise Lite is a visibility solution for small-scale networks that can monitor traffic and help reveal security threats.

Enhanced Traffic Monitoring

Integrate and manage a single APCON traffic monitoring switch within Enterprise Lite to access advanced optimization services and monitoring capabilities.

Scalable VM Traffic Visibility

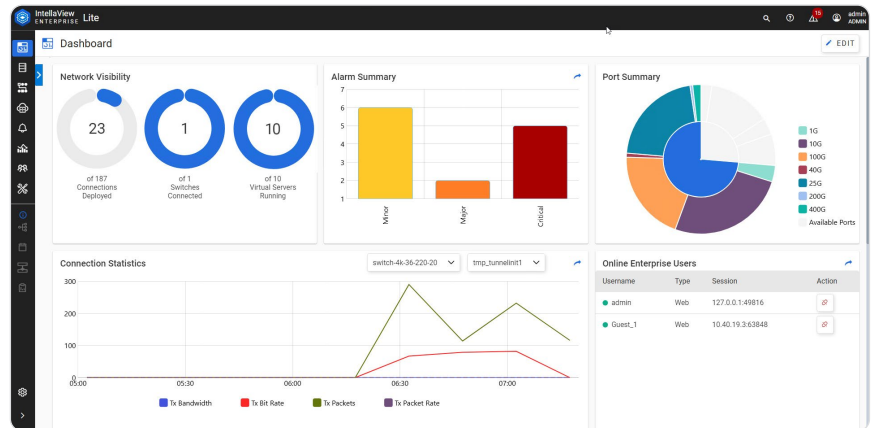
Gain visibility into virtual network environments with Enterprise Lite and IntellaTap-VM — APCON's VM traffic monitoring solution that can monitor traffic from a few to hundreds of VMs.

TOP FEATURES:

- Supports integration of one monitoring switch to manage settings, filters, connections, and alerts
- Supports integration of virtual traffic monitoring within one interface
- Use connections to filter, optimize, and deliver traffic of interest to security tools
- Easily record and view graphs of statistical data
- Set up configurable alerts and receive notifications

VM TRAFFIC VISIBILITY RISKS FOR NETWORK SECURITY

Network security requires all-inclusive data visibility into Virtual Machine (VM) and other on-premise traffic. The on-premise traffic can be easily tapped and monitored with solutions such as APCON's IntellaView monitoring switches. However, much of the East-West traffic (traffic between VMs) never leaves the virtual environment to traverse security tools residing on the physical network. This gap in visibility can lead to blind spots which can become significant vulnerability points for the entire network.



IntellaView Enterprise Lite | Dashboard Screen

ENTERPRISE LITE DELIVERS STREAMLINED TRAFFIC MONITORING FOR HYBRID NETWORKS

IntellaView Enterprise Lite is a limited set of features of the full version of IntellaView Enterprise. It provides a network visibility solution for smaller network environments — or private VM environments — that don't require extensive multi-switch management. It is ideal for security teams monitoring traffic from a limited number of devices and for those looking to improve their security infrastructure with the ability to upgrade to the full IntellaView Enterprise license as infrastructure grows.

A key feature of IntellaView Enterprise Lite is the ability to integrate VM traffic monitoring within the same interface. **IntellaTap-VM** is a licensed feature within IntellaView Enterprise Lite that allows users to capture virtual East-West traffic, manage connections with filters, and direct traffic through tunnels to multiple endpoints. Security tools or an APCON switch can serve as a tunnel endpoint that can decapsulate and optimize traffic, delivering high-quality data to security tools, all within the single interface of IntellaView Enterprise Lite.

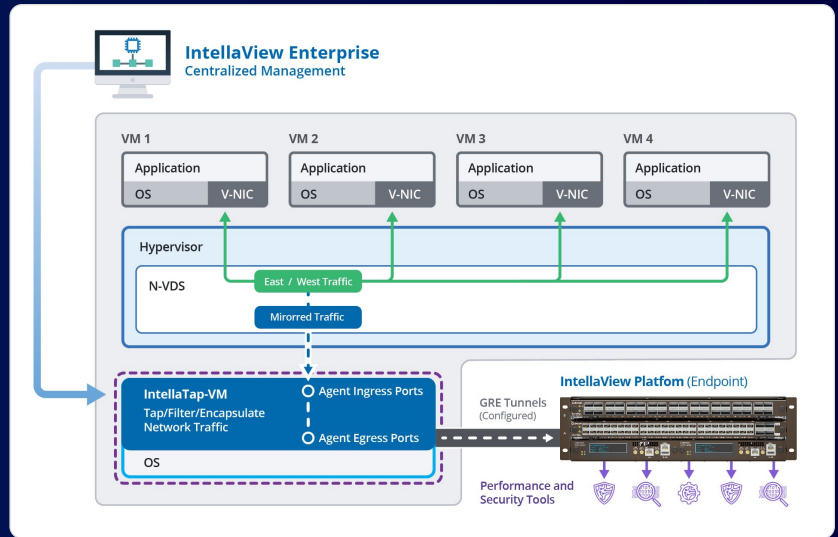
INTELLATAP-VM INTEGRATION WITH ENTERPRISE LITE

The IntellaTap-VM monitoring solution relies on users to deploy compatible VMs in their virtual environment. Users can mirror traffic of interest from other VMs to these specified VMs that serve as VM Taps.

IntellaView Enterprise Lite and IntellaTap-VM allow users to integrate multiple* VM Taps to access the mirrored VM traffic and manage:

- **VM Connections:** Direct and filter traffic
- **VM Tunnels:** Encapsulate and send traffic to multiple tunnel endpoints

Traffic received at the endpoints can be further optimized and processed by security tools and hardware like an APCON monitoring switch.



IntellaTap-VM | VM Monitoring Integration Diagram

* VM Tap bundle packages are available with IntellaTap-VM licensing.

FEATURES AND PURCHASE DETAILS

The IntellaView Enterprise Lite license allows for integrating IntellaTap-VM virtual traffic monitoring along with support for a single APCON monitoring switch and offers selected features from the full license of **IntellaView Enterprise**.

Some additional licensing is provided through the switch, like the advanced traffic optimization services. Review the table below to compare the main supported features in both tiers.

IntellaView Enterprise Lite License Number: ACI-9321-001

IntellaTap-VM License Number With VM Tap (Server) Bundle Options:

- 5 Server Bundle (ACI-9121-005)
- 10 Server Bundle (ACI-9121-010)
- 25 Server Bundle (ACI-9121-025)
- 50 Server Bundle (ACI-9121-050)

Operating System Support: Windows Server 2022, AlmaLinux, and RHEL 9.X

APCON Hardware Support: IntellaView, IntellaFlex XR, EdgeSwitch

APCON Software Support: IntellaView Enterprise 5.02.1 release or later

Features	Enterprise Lite	Enterprise
Virtual Traffic Monitoring (Requires Additional Licensing)	IntellaTap-VM (Supports NSX & OpenStack)	IntellaTap-VM (Supports NSX & OpenStack)
Maximum Number of Managed Switches	1	200
Maximum Number of Users	25 Total / 5 Concurrent	100 Total / 25 Concurrent
Statistics Support	Limited (Max of 30 Days)	Full (Max of 2 Years)
Advanced Traffic Optimization Services (Requires Advanced Switch Licensing)	Available	Available
Cross-Switch Traffic Management	—	✓
Advanced Task Scheduler	—	✓
Reports Generation	—	✓
Centralized User Management	✓	✓
Alarm & Event Management	✓	✓

Please review the Software Release Notes document for details to see the full list of supported features included in IntellaView Enterprise Lite.



APCON, Inc. • 9255 SW Pioneer Court, Wilsonville, Oregon 97070

+1 503-682-4050 • 1-800-624-6808 • @APCON • company/APCON • apcon.com

©2024-2025 APCON, Inc. All Rights Reserved. APCON is a registered trademark of APCON, Inc.

Asset: 24014
Updated: 02/25